

Services & Utilities Information RAG Status = RED

RED - No services or utilities information was available when preparing this drawing

ANGER - Desk based services & utilities search (dotted)

CAUTION - Field based services & utilities search (dotted)

GREEN - This drawing was prepared using information from intrusive searches to confirm depth and extent as shown, in combination with desk based searches

Users of this drawing are advised to undertake their own searches for utility & services information before progressing this scheme

SHE BOX - Safety, Health and Environment Information

The following items are unusual hazards or environmental factors that a competent and experienced contractor may not otherwise identify in the construction (C), operation (O), maintenance (M) or demolition (D) of this scheme:

- Unknown site conditions: this design has been prepared with no topographical survey, archaeological desk study, services search, UXO or ground investigation. These risks remain live until further studies are completed.
- Low parapet walls at bridge over river. Risk of falls from height.
- High vegetation limits visibility at bends
- Overhead cables crossing road (see note 7)

For more information refer to Designers Risk Assessment document ref. 10813-WCC-SBP-DR-01

Notes:

- Do not scale off plan. All dimensions in metres, unless otherwise noted.
- Drawing based on OS base plan. Co-ordinates based on OS grid. Levels based on OS datum (Newlyn).
- These drawings have been produced under the CDM 2015 Regulations. The Client is directed to their duties under Regulation 4 of CDM 2015.
- sustrans Ltd has been considered in the development of this design. The client is directed to their responsibilities under this Act. Refer to "For Everyone" information box below.
- This drawing has been produced only for the Project, Status, and Date shown.
- This drawing has been produced to be read in colour, for the sake of clarity. Printing or copying in black and white, or at a different sheet size may lead to misinterpretation of the design.
- Overhead cables are present alongside the road for much of the route. Where these cross the road the locations have been marked on the drawings with a hazard symbol wherever possible. This may not capture every location.



Project: **Wiltshire Council Support**

Title: **Salisbury to Porton Ford link Overview**

Status: **FOR INFORMATION** Scale at A1: **1:1000**

Drawing No: **10813-WCC-SBP-DR-01** Version: **1.0**

Ver	First Issue	Description	CD	HS	ML	Date
1						16/11/22

Feasibility Concept Outline Detail

Sub-metre precision to demonstrate geometrical design. Broadly aligns with RIBA Stage 2. Not for construction.

"FOR EVERYONE" - Equality and Inclusion Information

Failing to design for all potential users will exclude some people. This is inconsistent with the Equalities Act (2010) and Sustrans' For Everyone vision. The following indicate factors in this design which positively or negatively relate to this principle:

- Removal of through traffic creates low-traffic environment suitable for less experienced users **+ 01**
- Narrow carriageway may lead to close passing affecting user comfort **- 02**
- No footway provision will exclude some users **- 03**
- Minimum 1.5m gap to allow more users to access route **+ 04**

For more information refer to Design Decision Log document ref. 10813-WCC-SBP-DDL-01

Key:

Proposed raised table	
Proposed building	
Proposed kerb	
Proposed carriageway widening	

Services & Utilities Information RAG Status = RED

RED - No services or utilities information was available when preparing this drawing

ANGER - Desk based services & utilities search (dotted)
 ORANGE - Field based services & utilities search (dotted)
 GREEN - This drawing was prepared using information from intrusive searches to confirm depth and extent as shown, in combination with desk based searches

Users of this drawing are advised to undertake their own searches for utility & services information before progressing this scheme

SHE BOX - Safety, Health and Environment Information

The following items are unusual hazards or environmental factors that a competent and experienced contractor may not otherwise identify in the construction (C), operation (O), maintenance (M) or demolition (D) of this scheme:

- Unknown site conditions: this design has been prepared with no topographical survey, archaeological desk study, services search, UXO or ground investigation. These risks remain live until further studies are completed.
- Low parapet walls at bridge over river. Risk of falls from height.
- High vegetation limits visibility at bends
- Overhead cables crossing road (see note 7)

For more information refer to Designers Risk Assessment document ref. 10813-WCC-SBP-DR-01

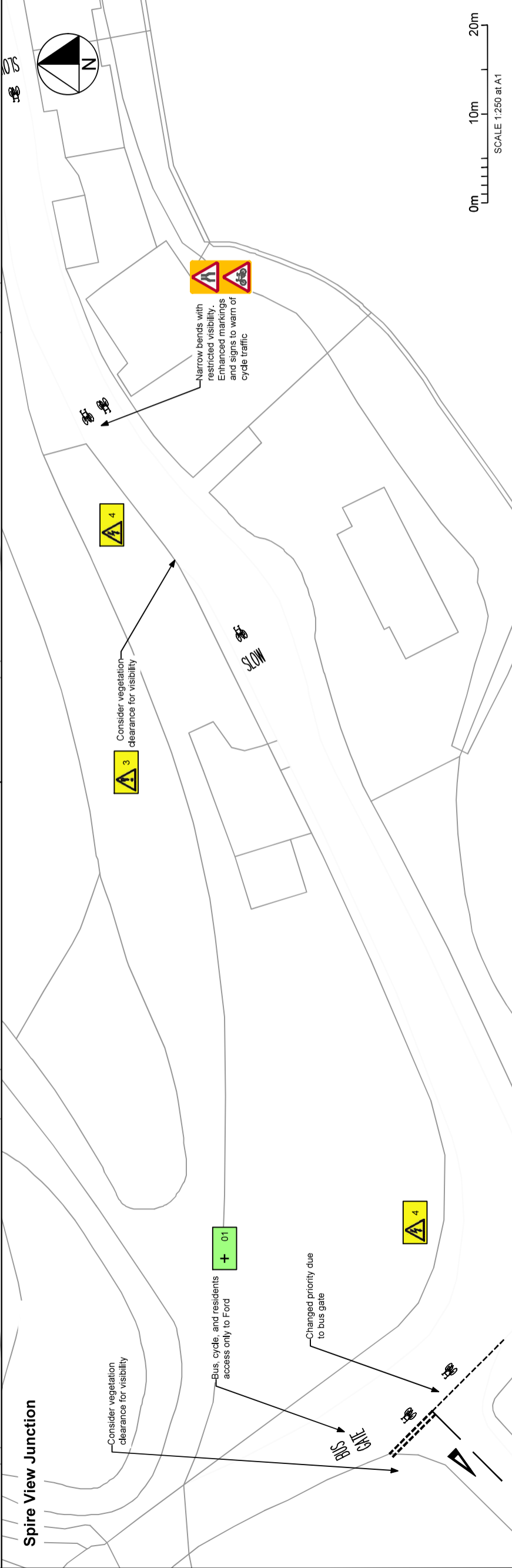
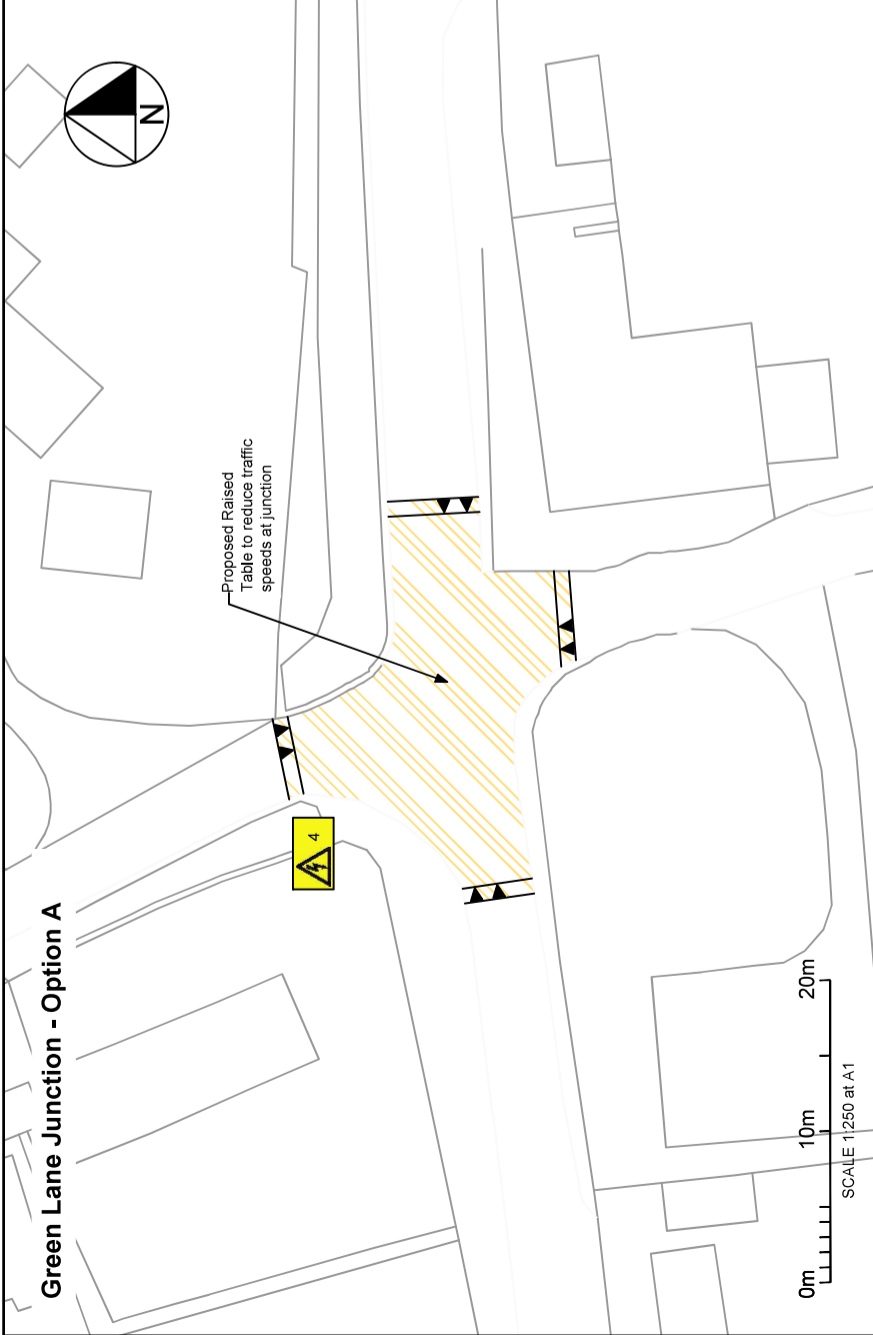
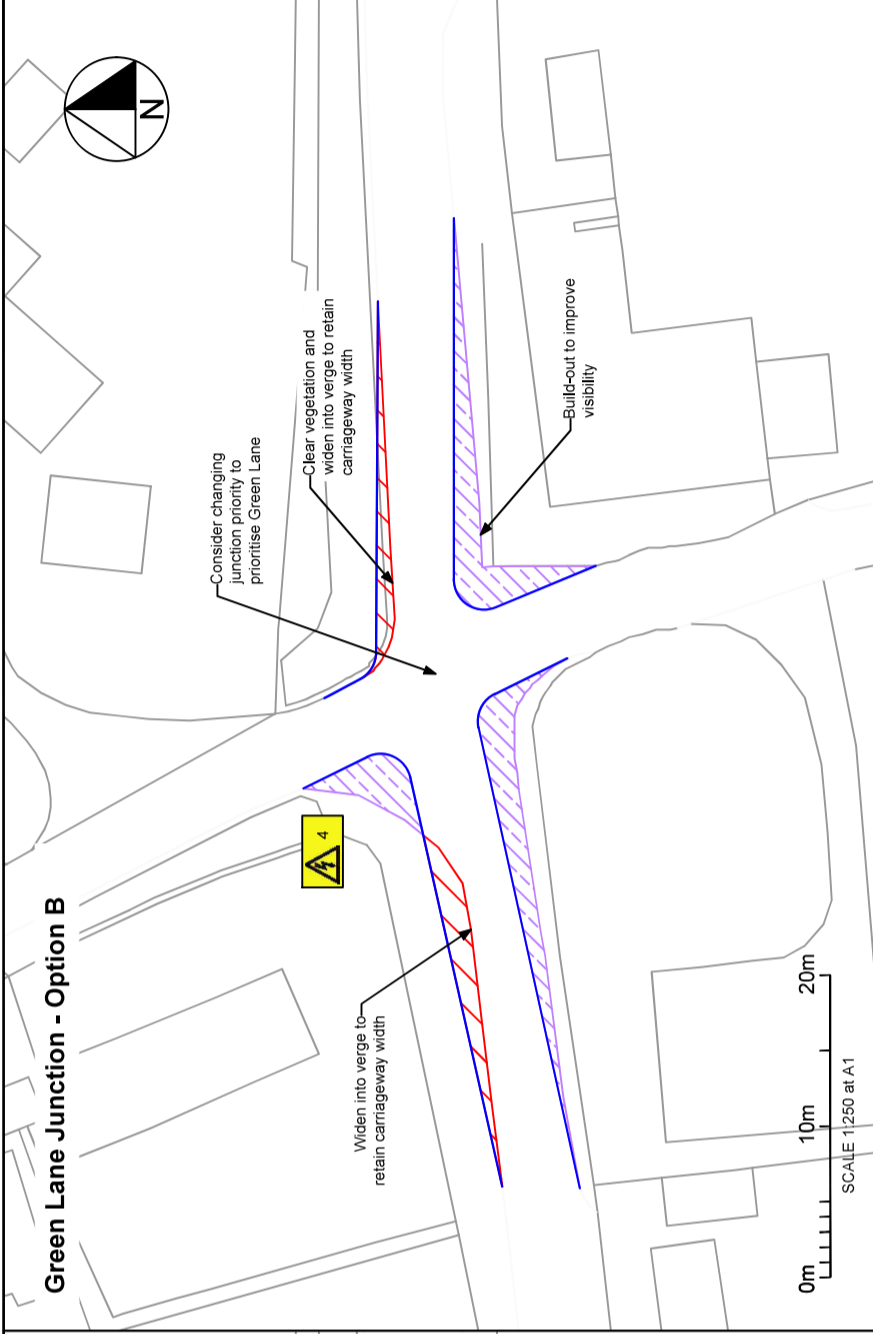
Notes:

- Do not scale off plan. All dimensions in metres, unless otherwise noted.
- Drawing based on OS base plan. Co-ordinates based on OS grid. Levels based on OS datum (Newlyn).
- These drawings have been produced under the CDM 2015 Regulations. The Client is directed to their duties under Regulation 4 of CDM 2015.
- sustrans has been considered in the development of this design. The client is directed to their responsibilities under this Act. Refer to "For Everyone" information box below.
- This drawing has been produced only for the Project, Status, and Date shown.
- This drawing has been produced to be read in colour, for the size specified. Printing or copying in black and white, or on a different sheet size may lead to misinterpretation of the design.
- Overhead cables are present alongside the road for much of the route. Where these cross the road the locations have been marked on the drawings with a hazard symbol wherever possible. This may not capture every location.

sustrans
 JOIN THE MOVEMENT
 2 Cathedral Square, College Green, Bristol BS1 5DD
 Tel. 0117 926 8883 www.sustrans.org.uk

Project: **Wiltshire Council Support**
 Title: **Salisbury to Porton Ford Link Options**

Status: **FOR INFORMATION** Scale at A1: **1:250**
 Drawing No: **10813-WCC-SBP-DR-02** Version: **1.0**



Ver	Description	CD	HS	ML	Date
1	First Issue				16/11/22

Feasibility Concept Outline Detail

Sub-metre precision to demonstrate geometrical design. Broadly aligns with RIBA Stage 2. Not for construction.

"FOR EVERYONE" - Equality and Inclusion Information

Failing to design for all potential users will exclude some people. This is inconsistent with the Equalities Act (2010), and Sustrans' For Everyone vision. The following indicate factors in this design which positively or negatively relate to this principle:

- Removal of through traffic creates low-traffic environment suitable for less experienced users **+ 01**
- Narrow carriageway may lead to close passing affecting user comfort **- 02**
- No footway provision will exclude some users **- 03**

For more information refer to Design Decision Log document ref. 10813-WCC-SBP-DDL-01

Key:

	Proposed raised table
	Proposed building
	Proposed kerb
	Proposed carriageway widening

